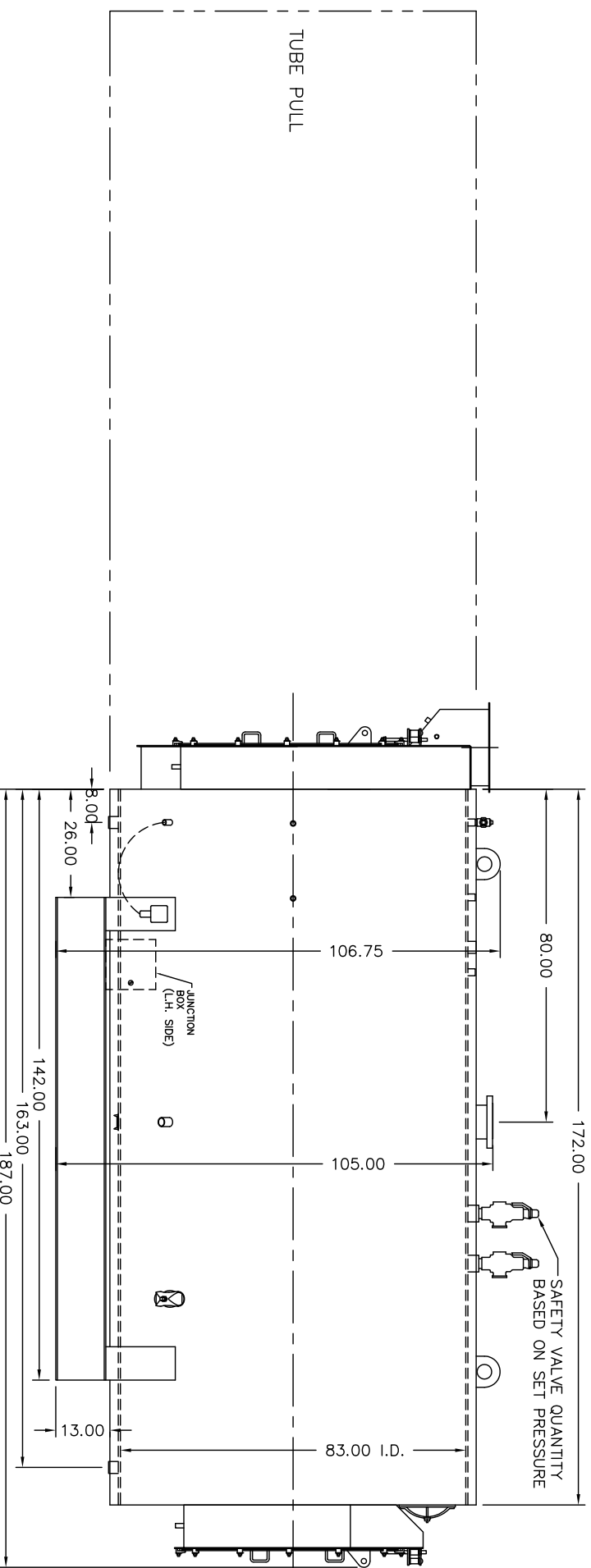
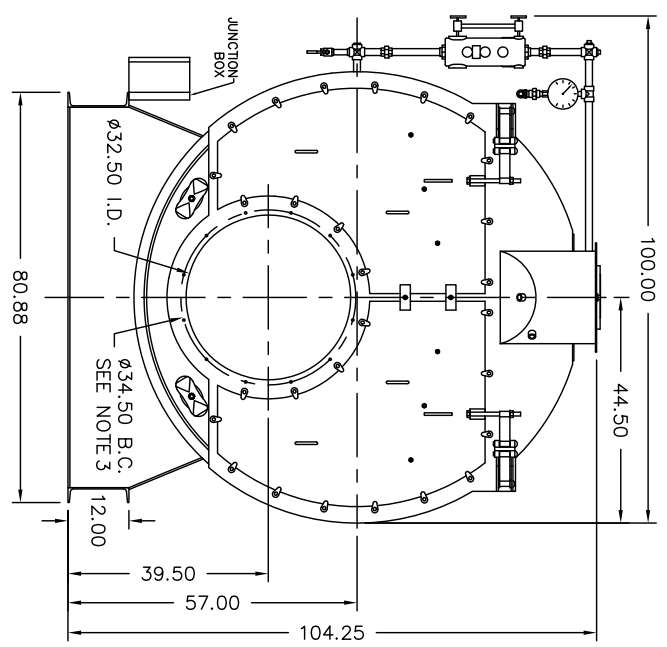
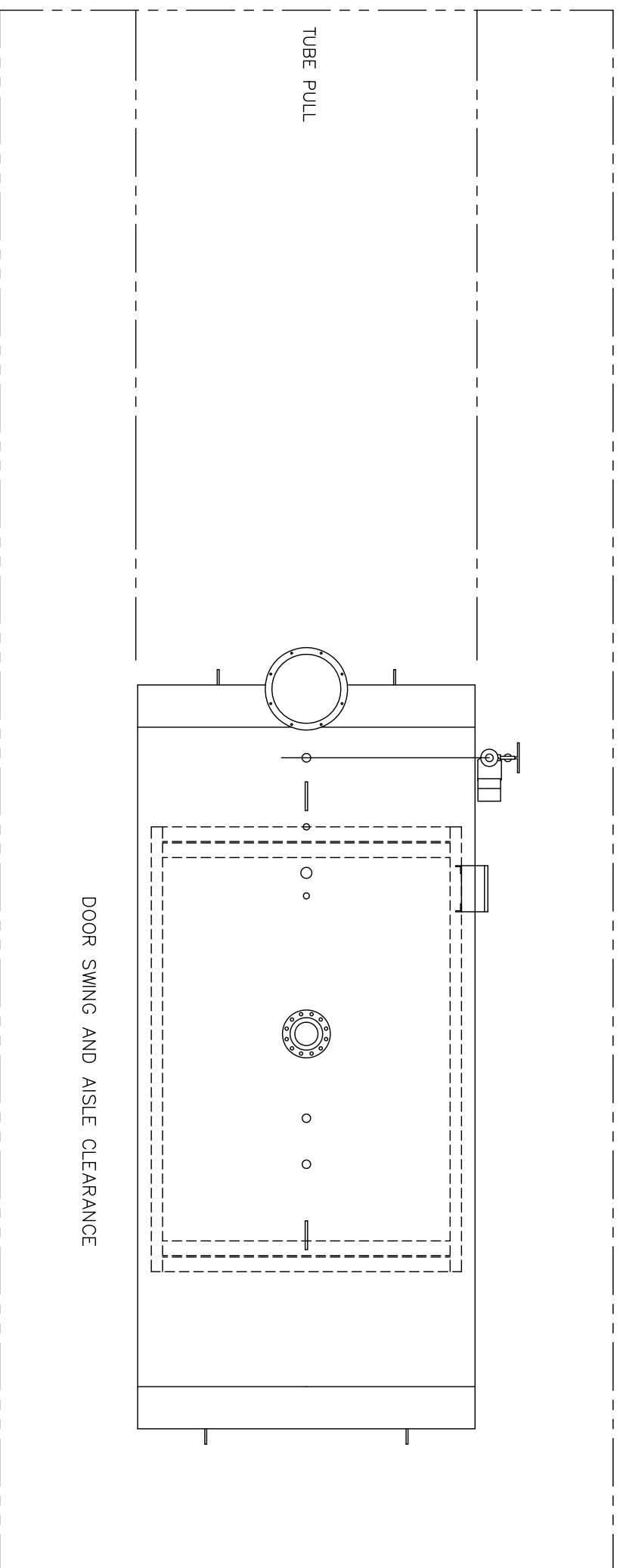


NOTES:

1. MINIMUM AISLE CLEARANCE 36" FROM BOILER SIDES AND REAR. (THIS REQUIREMENT MAY VARY WITH LOCATION. CHECK STATE AND LOCAL CODES IN THE AREA OF INSTALLATION.)
2. OPTIONS AND ADDITIONAL EQUIPMENT ORDERED MAY AFFECT OVERALL DIMENSIONS. DRAWINGS ARE FOR STANDARD BOILER PACKAGE.
3. (12) 1/2 UNC X 1.375 LONG STUDS EQUALLY SPACED STRADDLE CENTERLINES. STUDS FOR BURNER REFRACTORY (DRY OVEN) MOUNTING. REFRACTORY MUST EXTEND 14.50" MINIMUM PAST MOUNTING FLANGE.



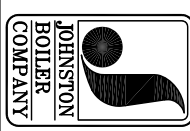
DWG NO. 300B0359

REVISIONS

A	1-12-07	JRS	ADDED PANELS, UPDATED BURNER, ADDED TOP CENTERLINES CONNECTIONS IN TOP VIEW.
B	3-19-10	CW	REV'D SAFETY VALVE LOCATION.

REFERENCE DRAWINGS

PLENUM: #212B0160
 PV BASE: #101B0744
 FR FLUE BOX: #201B0283
 RR FLUE BOX: #205B0158
 #206B0154



THIS DRAWING IS THE PROPERTY OF THE JOHNSTON BOILER COMPANY. THE DISCLOSURES CONTAINED ON THIS DRAWING ARE MADE WITH THE UNDERSTANDING THAT THEY ARE CONFIDENTIAL AND WILL NOT BE USED IN ANY WAY DETRIMENTAL TO THIS COMPANY'S INTEREST.

SCALE	CAD/FULL	DATE	2-1-07	DRAWN	JRS	CHECKED	JRS	APPROVED	DWG. NO.	300B0359-03
JOHNSTON BOILER COMPANY FERRYSBURG, MICHIGAN 49409 BOILER TEMPLATE - 509 PFTX300-4-150#S										

So#
 REV B