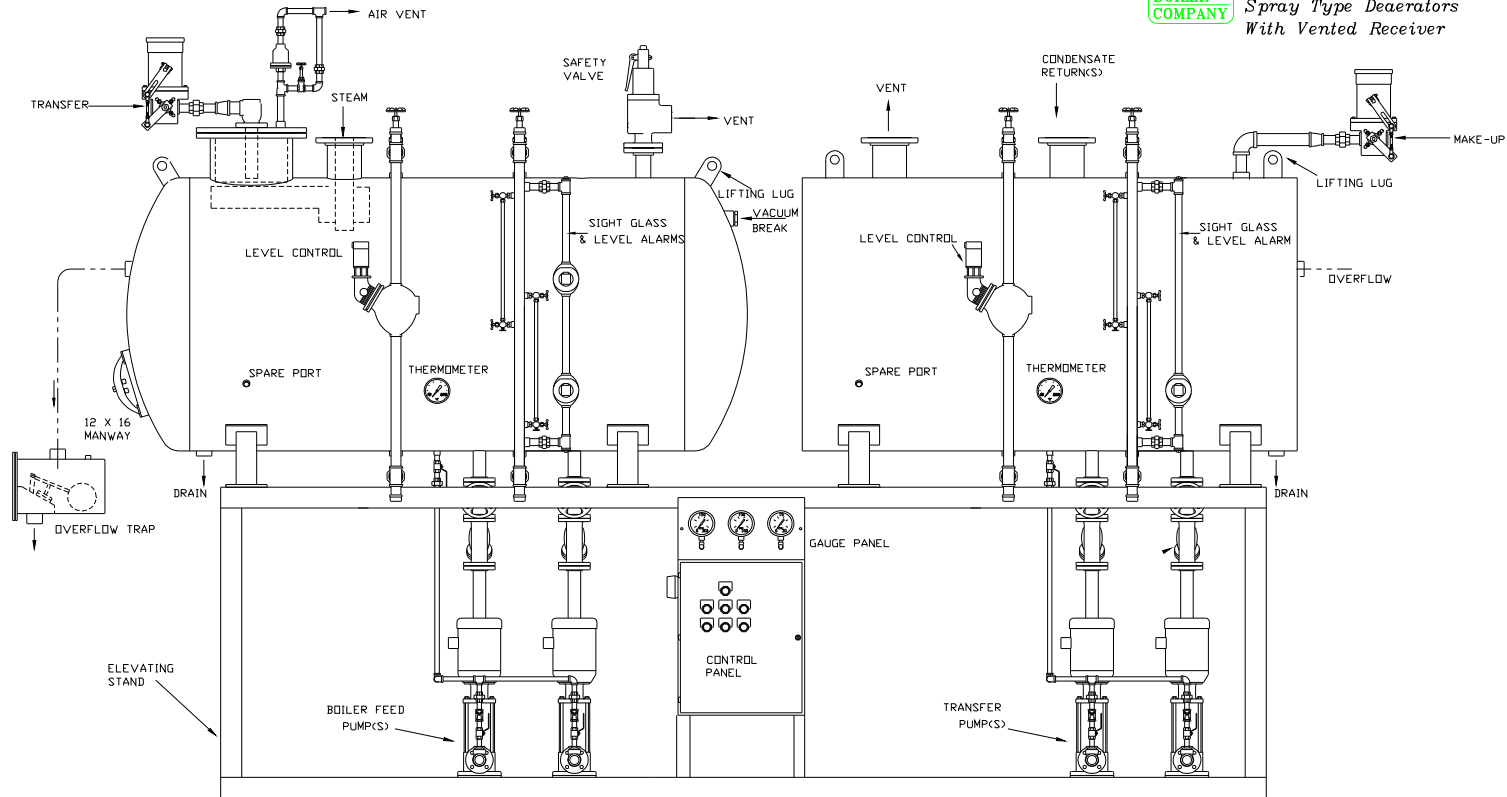




2014
Johnston Deaerator
Model 260
Spray Type Deaerators
With Vented Receiver



Model	Capacity (lbs/hr)	(A) diameter (in.)	(B) length (in.)	(C) length (in.)	(D) height (in.)	volume overflow (gal.)	storage (min.)	weight (lbs) less pump, stand, panel.		
								empty	operating	full
260-001.0	10,000									
260-001.5	15,000									
260-002.0	20,000									
260-003.0	30,000									
260-004.0	40,000									
260-005.0	50,000									
BUILT TO SUIT APPLICATION										

Note: 1 All DA vessels designed, fabricated and constructed to ASME Sec. VIII for 50 psig 450 degF and include 1/16" CA
 2 Data subject to change without notice.
 3 The vented tank will not be ASME code stamped.