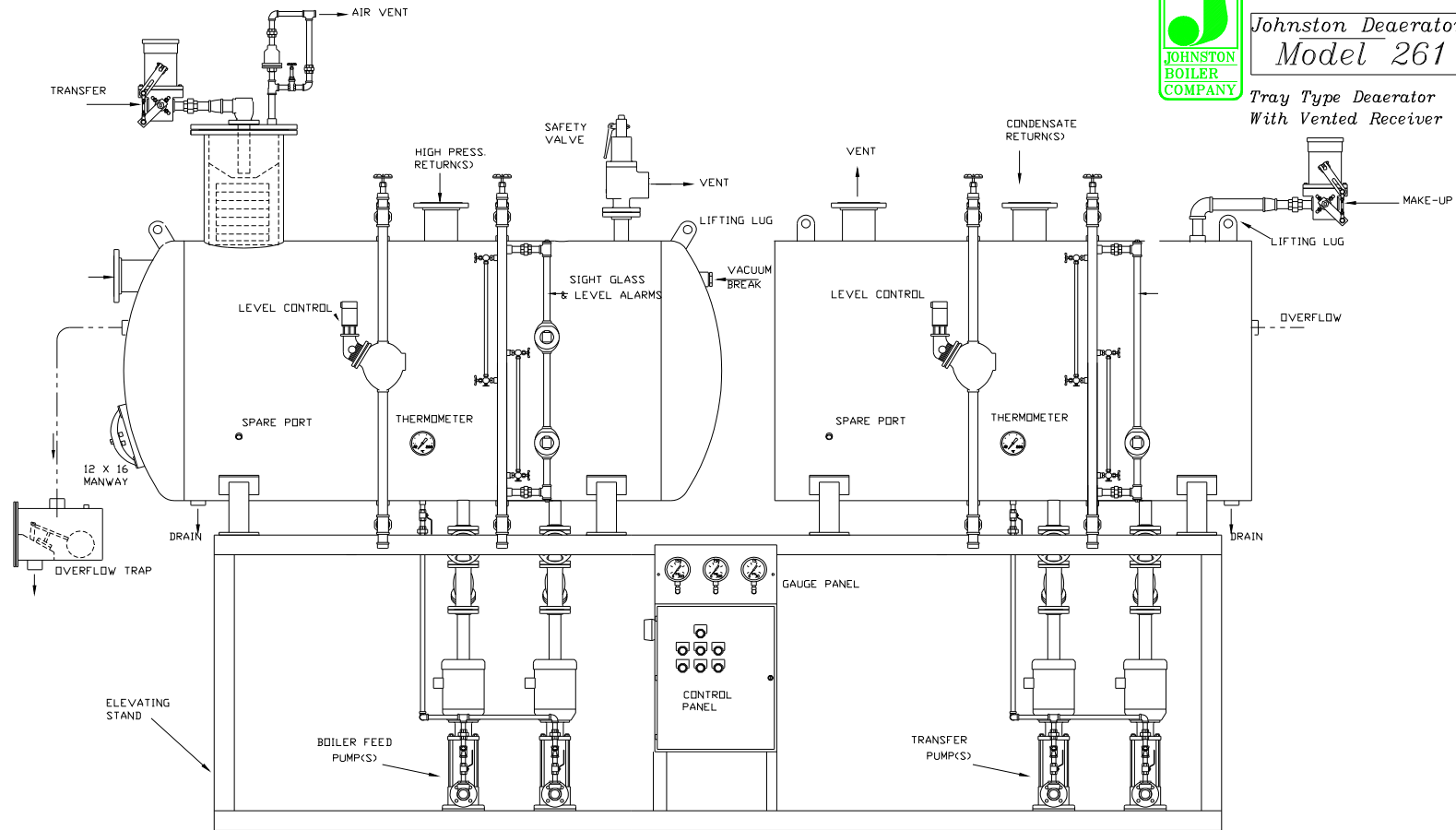




2014
 Johnston Deaerator
 Model 261

Tray Type Deaerator
 With Vented Receiver



Model	Capacity (lbs/hr)	(A) diameter (in.)	(B) length (in.)	(C) length (in.)	(D) height (in.)	volume overflow (gal.)	storage (min.)	weight (lbs) less pump, stand, panel.		
								empty	operating	full
261-001.0	10,000									
261-001.5	15,000									
261-002.0	20,000									
261-003.0	30,000									
261-004.0	40,000									
261-005.0	50,000									
BUILT TO SUIT APPLICATION										

Note: 1 All vessels designed, fabricated and constructed to ASME Sec. VIII for 50 psig 450 degF and include 1/16" CA
 2 Data subject to change without notice.
 3 Vented tank will not be ASME code stamped.